



LABORATOIRES
SÉROBIOLOGIQUES

Division de Cognis France

ELESTAB® 4150 LIPO

LIPOSOLUBLE PRESERVATIVE SYSTEM

DEFINITION / COMPOSITION

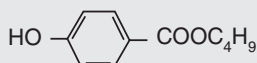
ELESTAB® 4150 LIPO is a liposoluble preservative system designed for microbiological stabilization of cosmetic preparations.

Components:

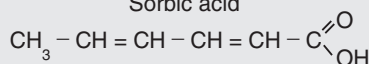
ELESTAB® 4150 LIPO is a mixture of:

- 1 paraben: **butylparaben**,
- 1 acid: **sorbic acid**.

Butylparaben



Sorbic acid



ANTIMICROBIAL PROPERTIES

Strains	ELESTAB® 4150 LIPO Concentration (µg/ml)	
	MIC (*)	MMC (**)
Bacteria		
<i>Staphylococcus aureus</i> NCTC 10788	156	156
<i>Staphylococcus epidermidis</i> NCIMB 8853	40	1,250
<i>Lactobacillus brevis</i> NCIMB 11973	625	625
<i>Lactococcus lactis</i> NCIMB 6681	625	625
<i>Corynebacterium xerosis</i> NCTC 8481	625	625
<i>Escherichia coli</i> NCIMB 8545	1,250	1,250
<i>Enterobacter cloacae</i> NCIMB 10101	1,250	1,250
<i>Klebsiella aerogenes</i> NCTC 7427	1,250	1,250
<i>Klebsiella pneumoniae</i> NCIMB 10341	1,250	1,250
<i>Proteus vulgaris</i> NCIMB 4175	625	1,250
<i>Pseudomonas aeruginosa</i> NCIMB 8626	2,500	2,500
<i>Pseudomonas putida (fluorescens)</i> ATCC 12842	10,000	10,000
<i>Salmonella typhimurium</i> NCIMB 10258	2,500	5,000
<i>Serratia marcescens</i> NCIMB 11851	5,000	10,000
Fungi		
<i>Aspergillus niger</i> IMI 149007	313	1,250
<i>Penicillium pinophilum</i> ATCC 9644	156	313
Yeasts		
<i>Candida albicans</i> NCPF 3179	313	625
<i>Saccharomyces cerevisiae</i> NCPF 3178	313	625

(*) MIC = Minimum Inhibitory Concentration

(**) MMC = Minimum Microbicidal Concentration

COSMETIC USE

ELESTAB® 4150 LIPO is an oil soluble preservative system for W/O or O/W emulsions:

- creams,
- lotions,
- makeup...

in association with hydrosoluble preservatives such as ELESTAB® 388, ELESTAB® 4112...

DOSAGE / SOLUBILITY / MODE OF INCORPORATION

1. Dose of use: 0.10 to 0.35%.

The relevant antimicrobial protection of the cosmetic product has to be checked by a challenge test.

2. Solubility: ELESTAB® 4150 LIPO is soluble in oils and fats (75 - 80°C), and partly soluble in water.

3. Mode of incorporation: ELESTAB® 4150 LIPO must be solubilized into the fatty phase of the emulsion at 75°C.

During the formulation of O/W emulsion, sorbic acid has affinity for the water phase, and the pH of the final emulsion is acidic (pH = 3.5).

COMPATIBILITY / INCOMPATIBILITY

The acidic pH of sorbic acid (pH = 3) may have an influence on the behaviour of other cosmetic raw materials.

ELESTAB® 4150 LIPO interacts with alkylglucosides, decreasing their emulsifying properties; therefore a low amount of a basic component is needed in the water phase to increase the pH value.

The suitable pH is between 3 and 8, for higher pH, potassium sorbate could be generated in situ.

ANALYTICAL CHARACTERISTICS

1. Aspect: white fine powder with a weak odor.

2. Specifications: upon request.

TOLERANCE

Good.

STORAGE

In its original packaging, at 15 - 25°C.

REGULATORY STATUS

Approved: USA, EC, Japan, Australia, Canada.

INCI NAME

Butylparaben (and) Sorbic Acid.

MANUFACTURER / SUPPLIER

Laboratoires Sérobiologiques, division de Cognis France.